

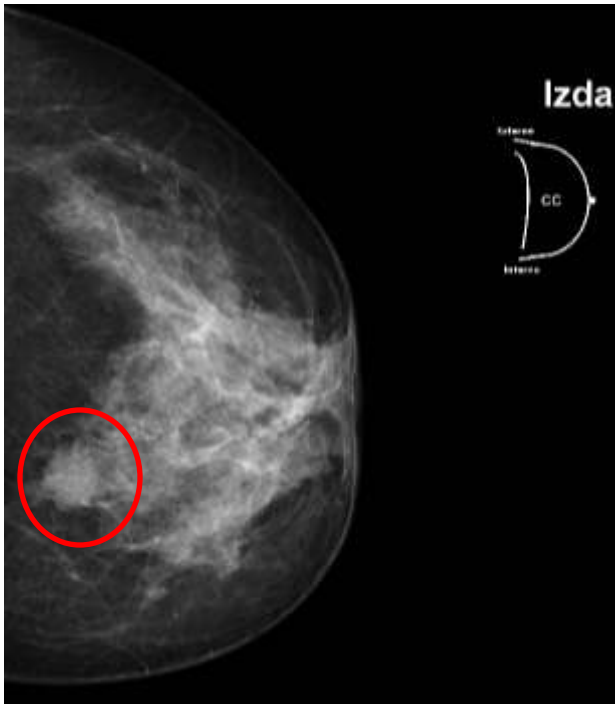
# Presentació del Grup Català de Patologia Mamària Cas 1



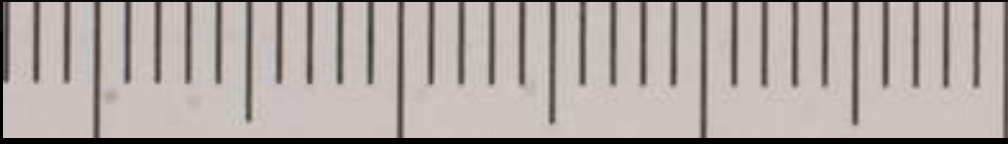
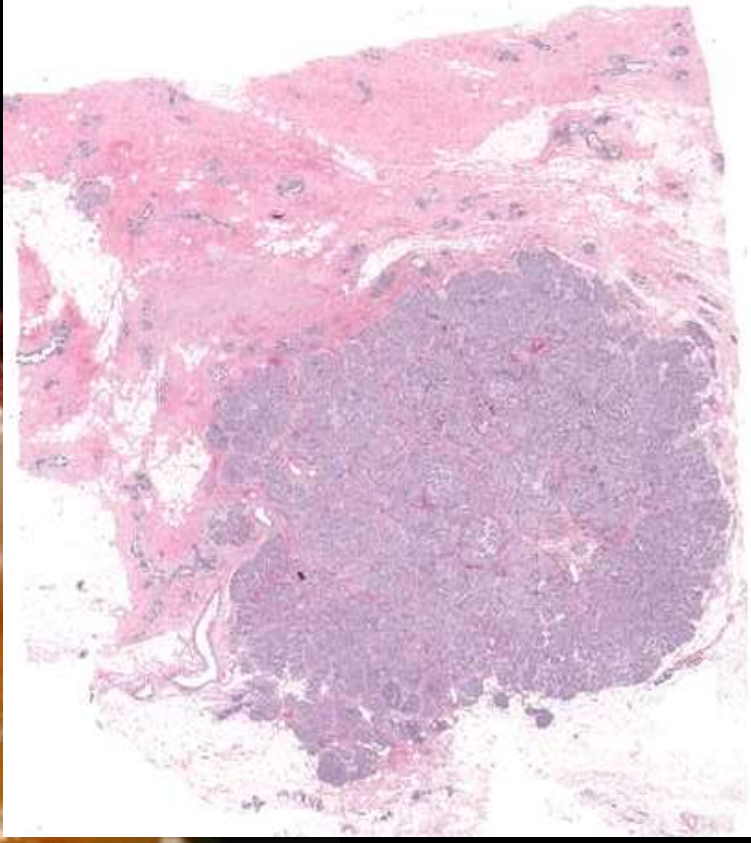
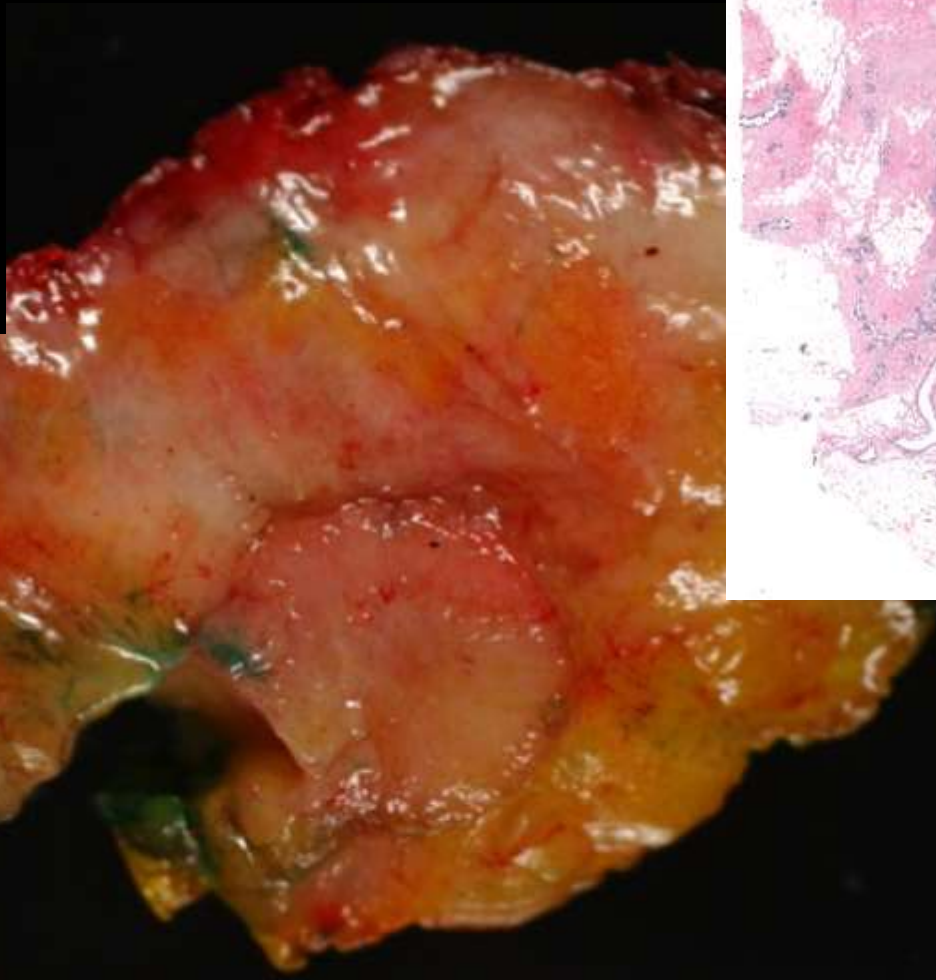
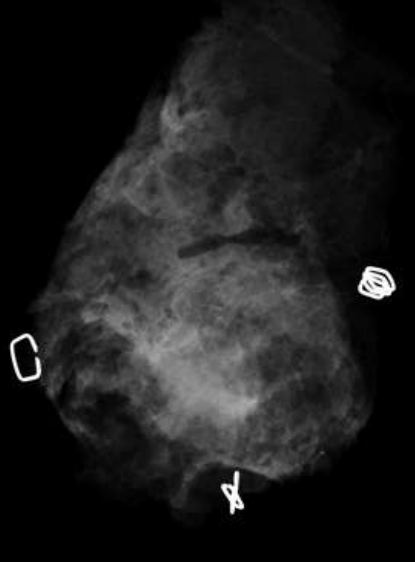
**Dr. Josep M<sup>a</sup> Corominas**  
**Hospital del Mar-UAB /UPF**

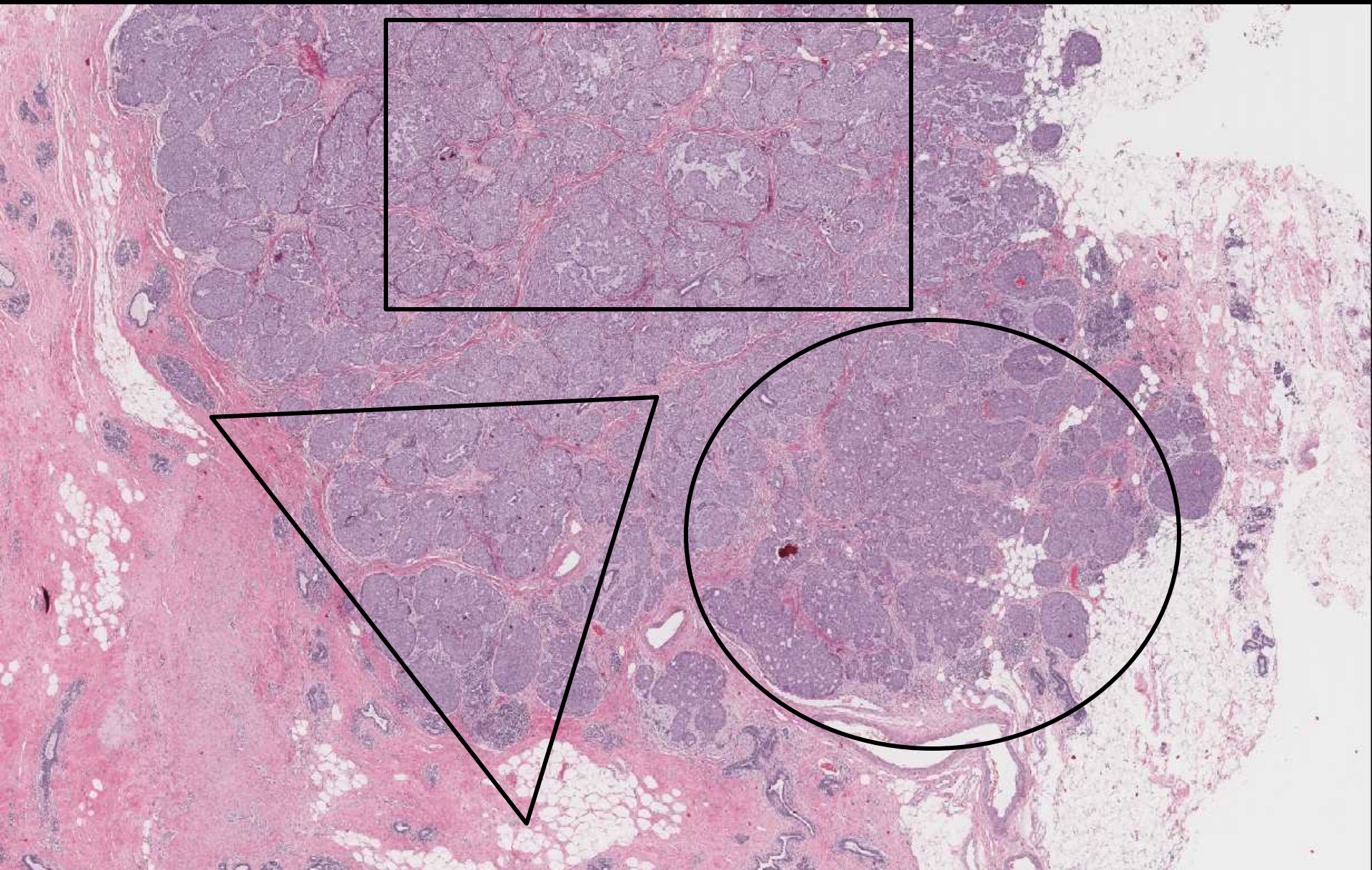
# HISTÒRIA CLÍNICA

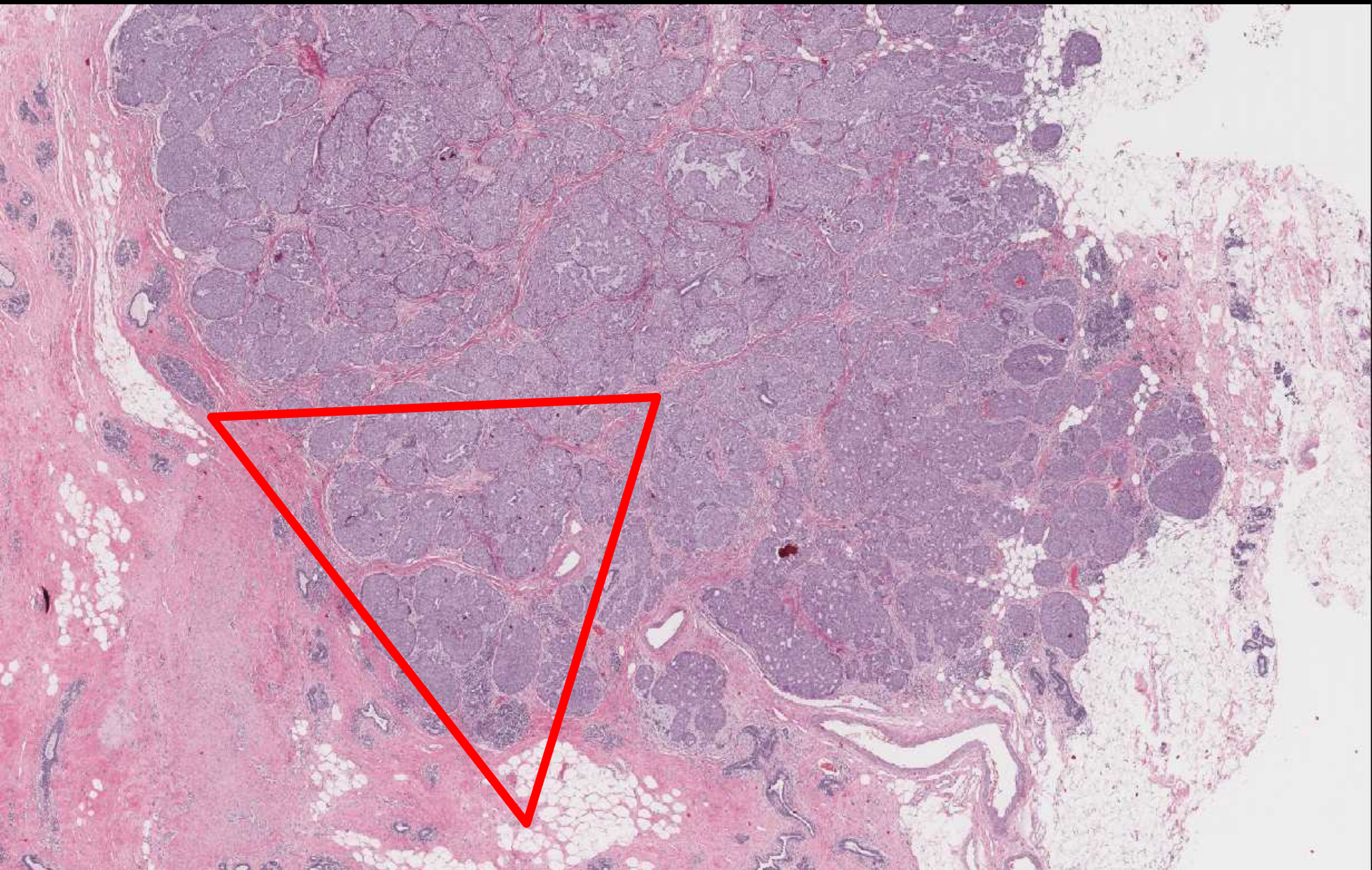
- Dona de 49 anys
- Es palpa nòdul en la mama esquerra

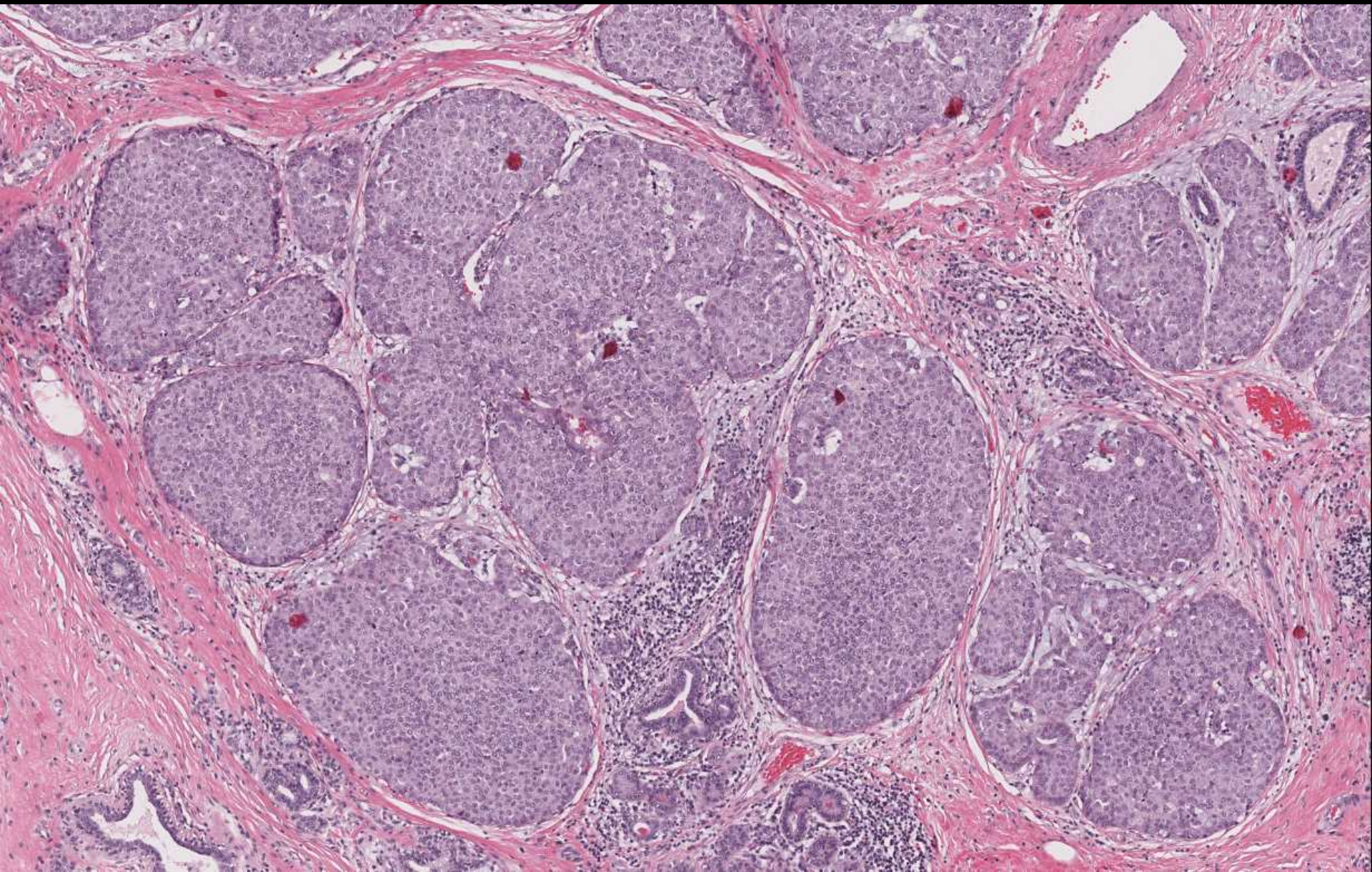


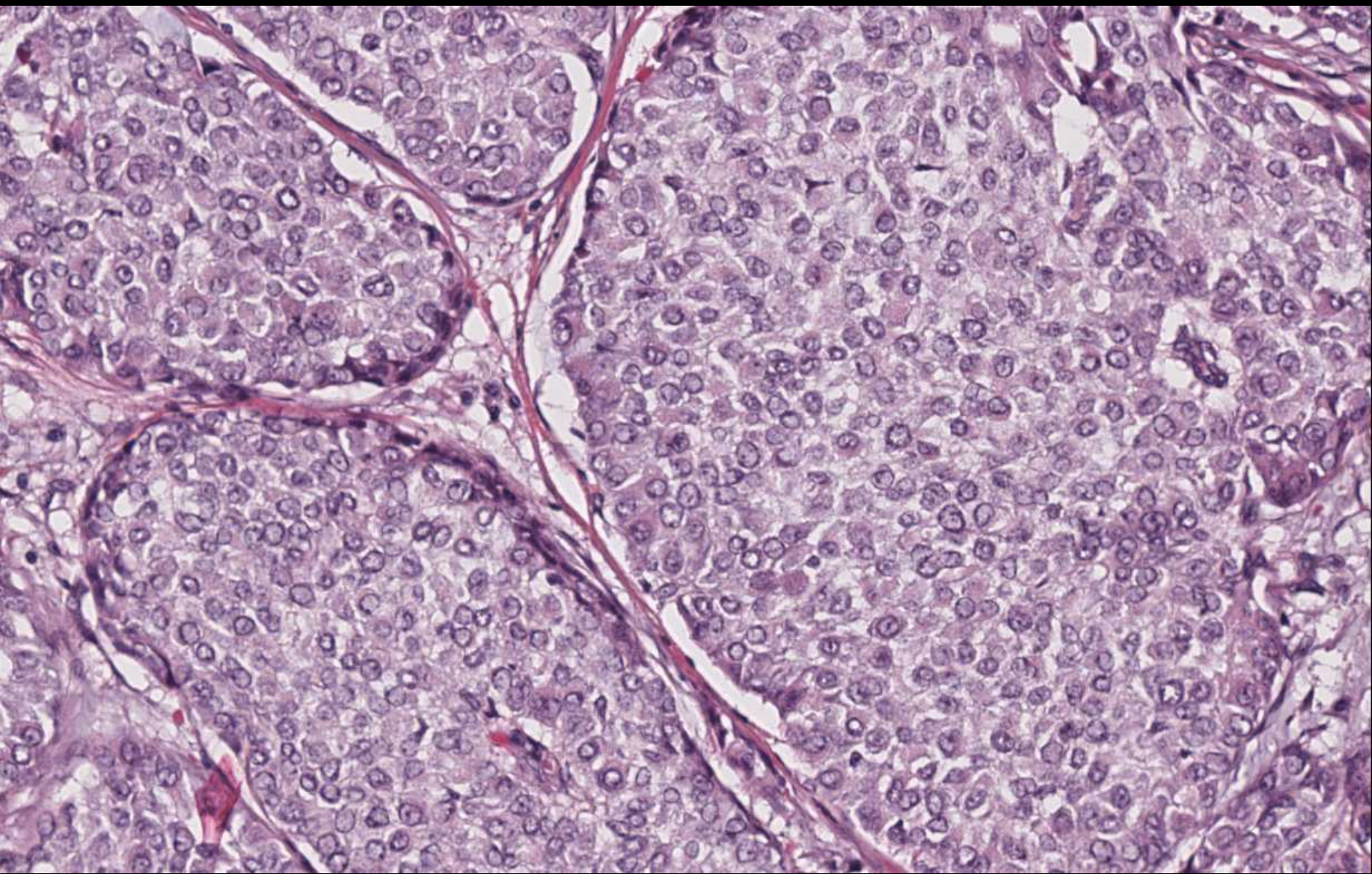
**Nòdul quadrant supero intern mama esquerra**

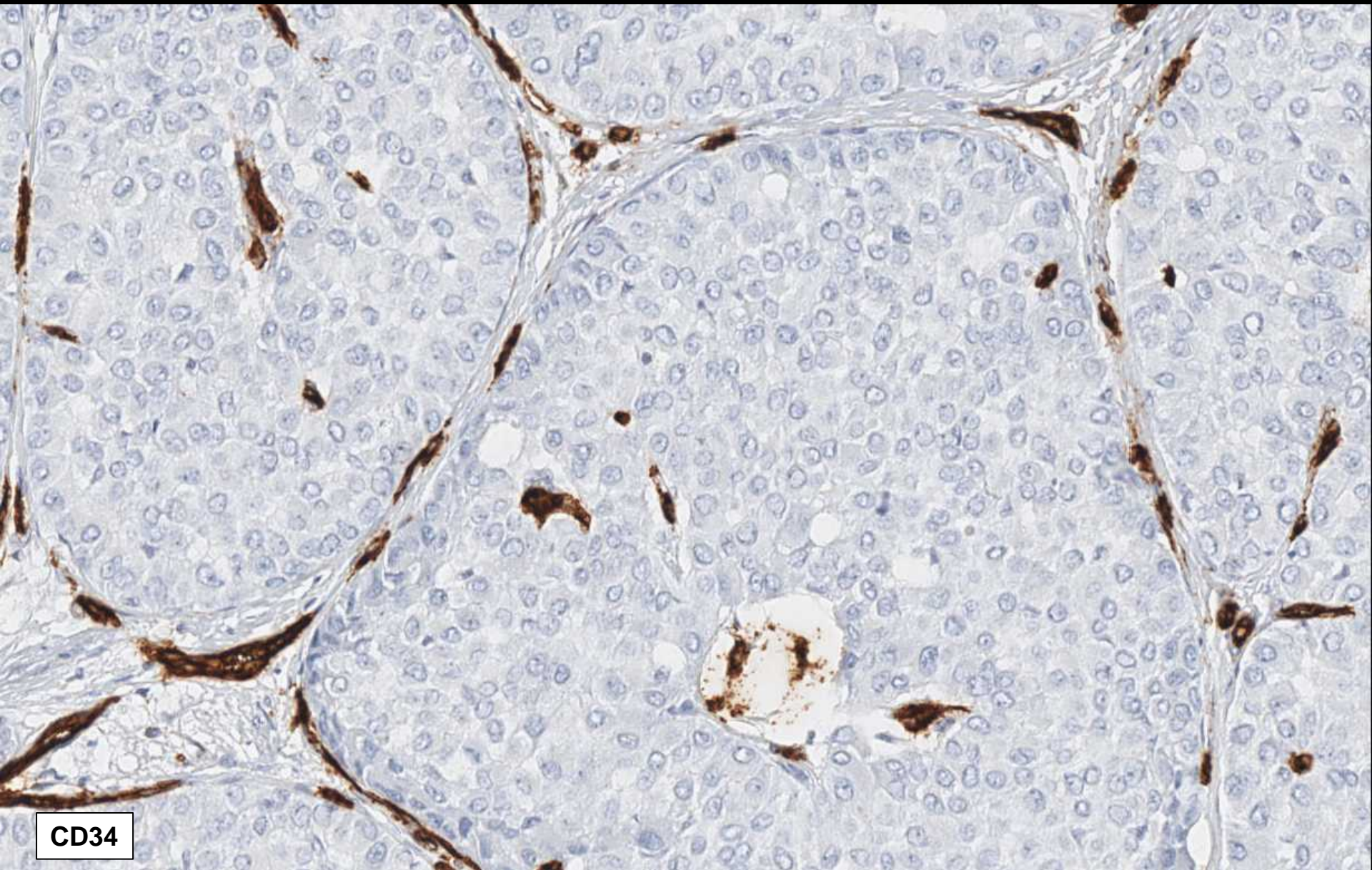






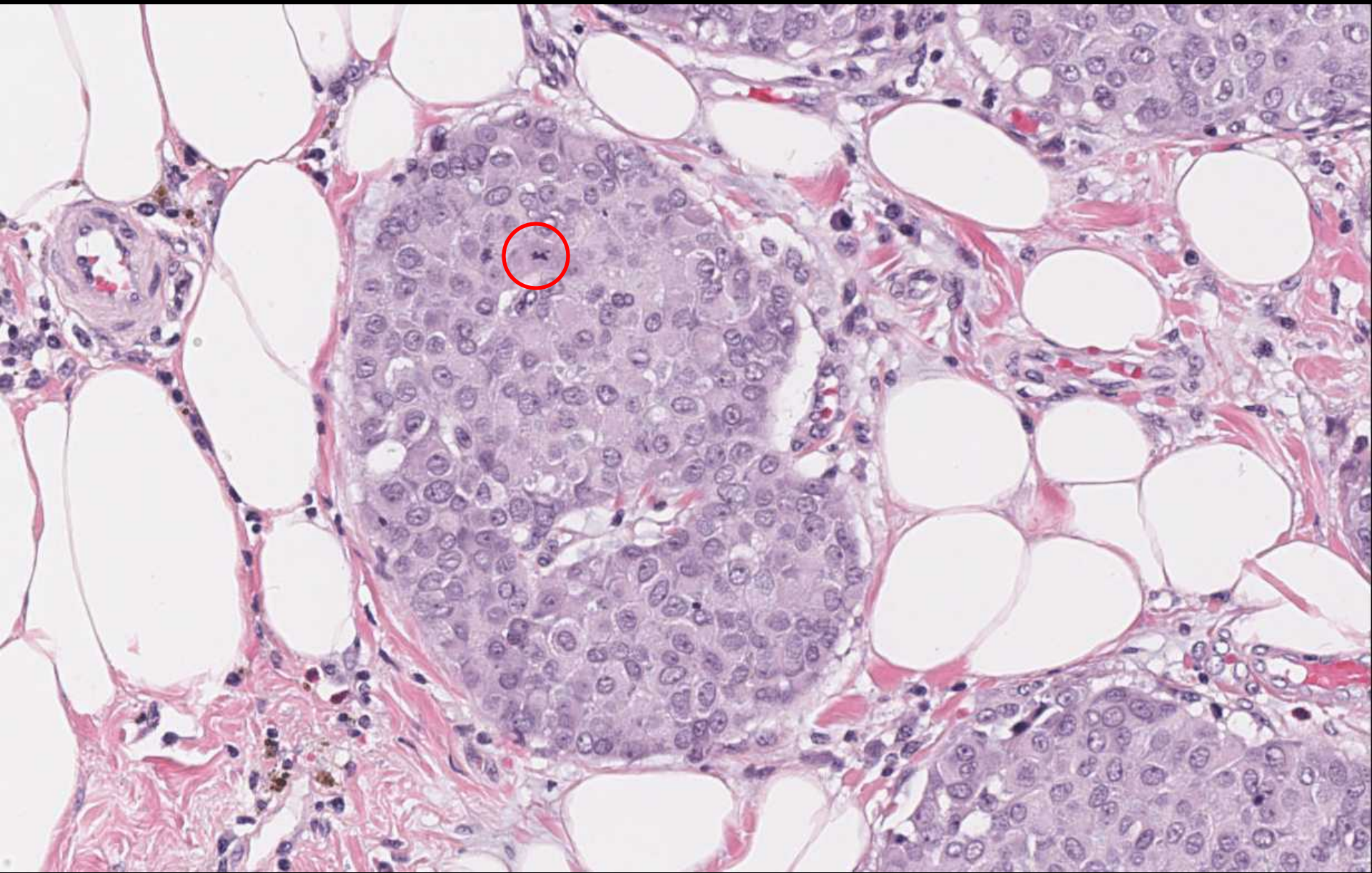


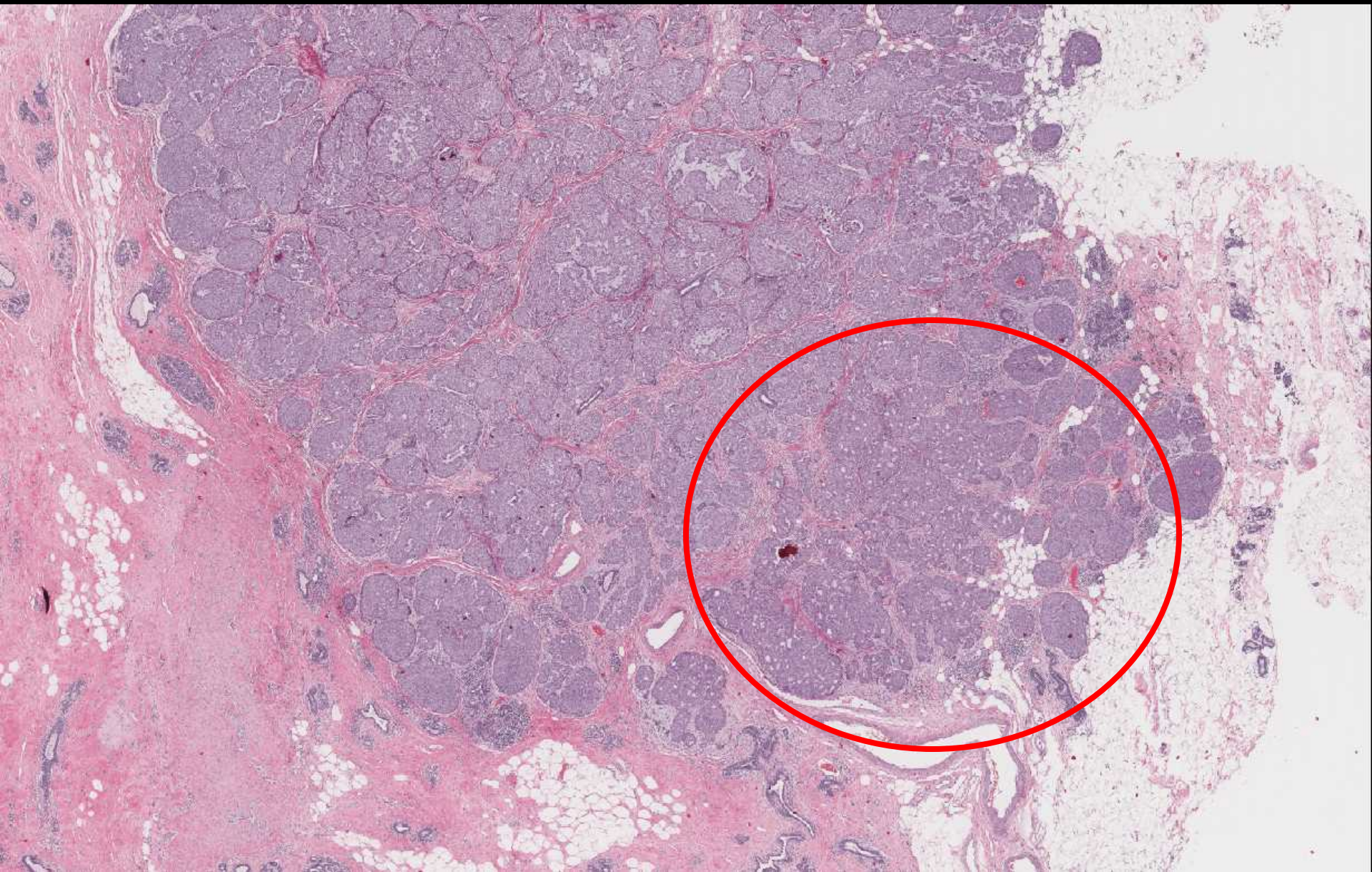


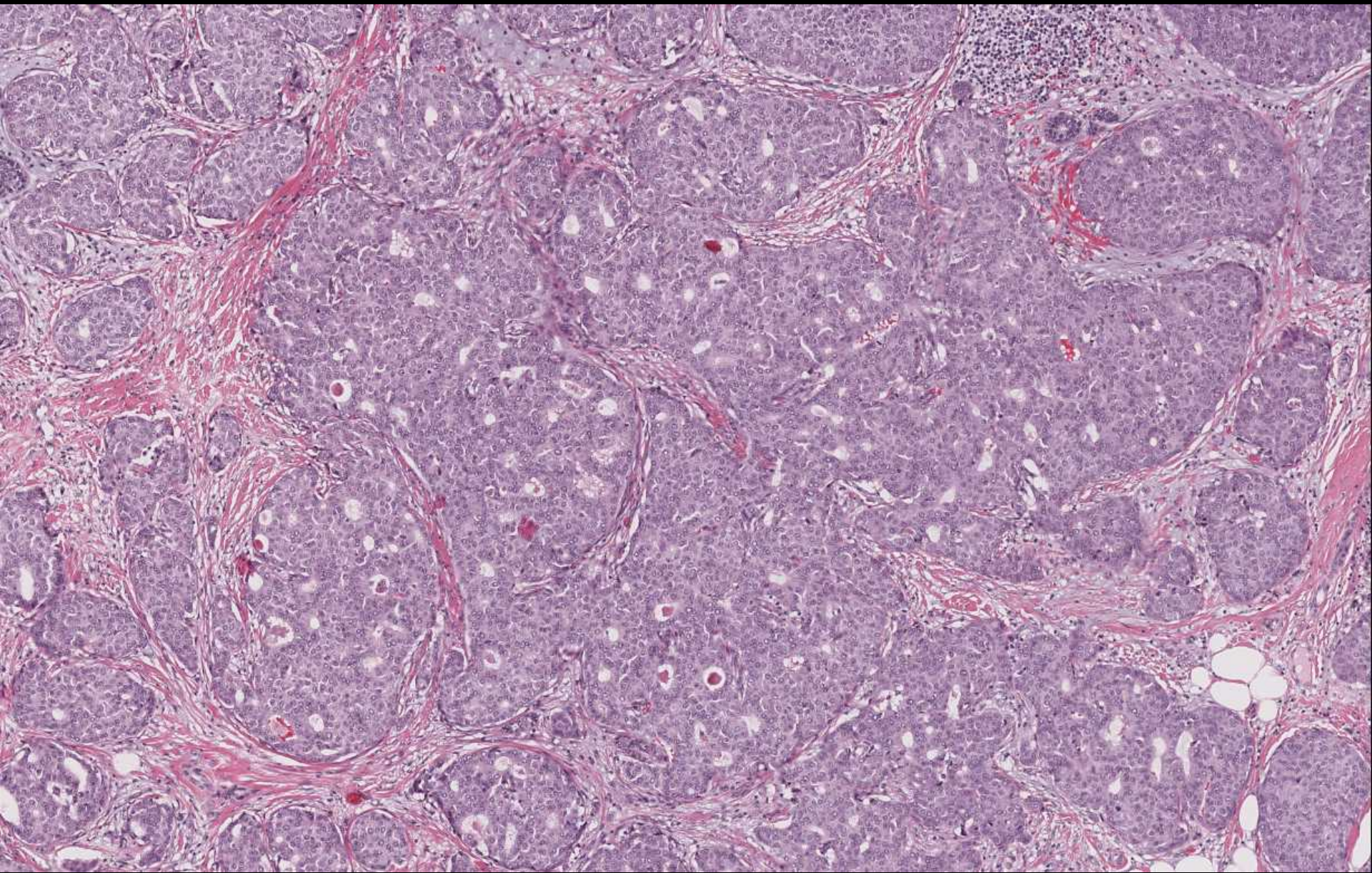


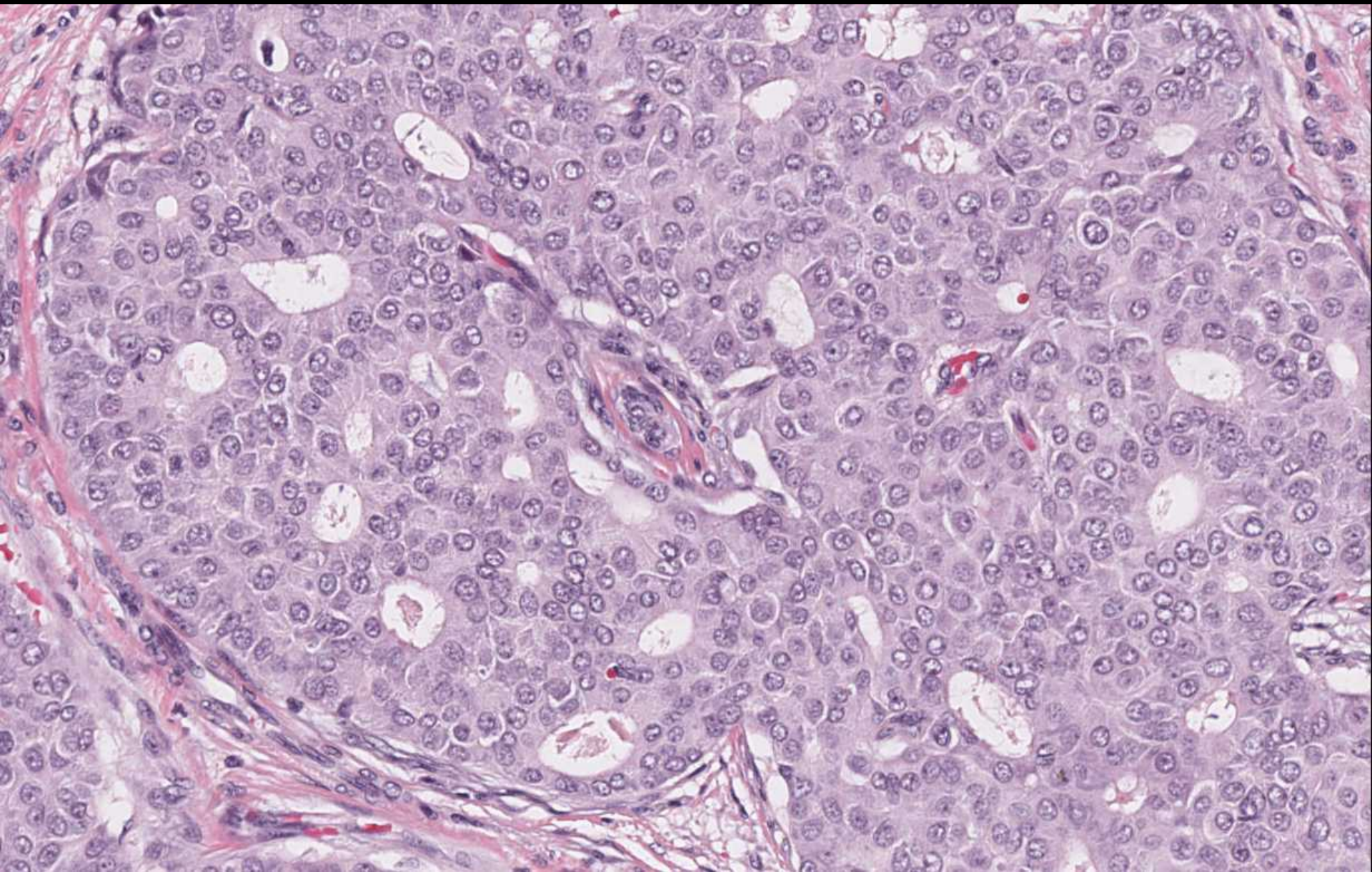
CD34

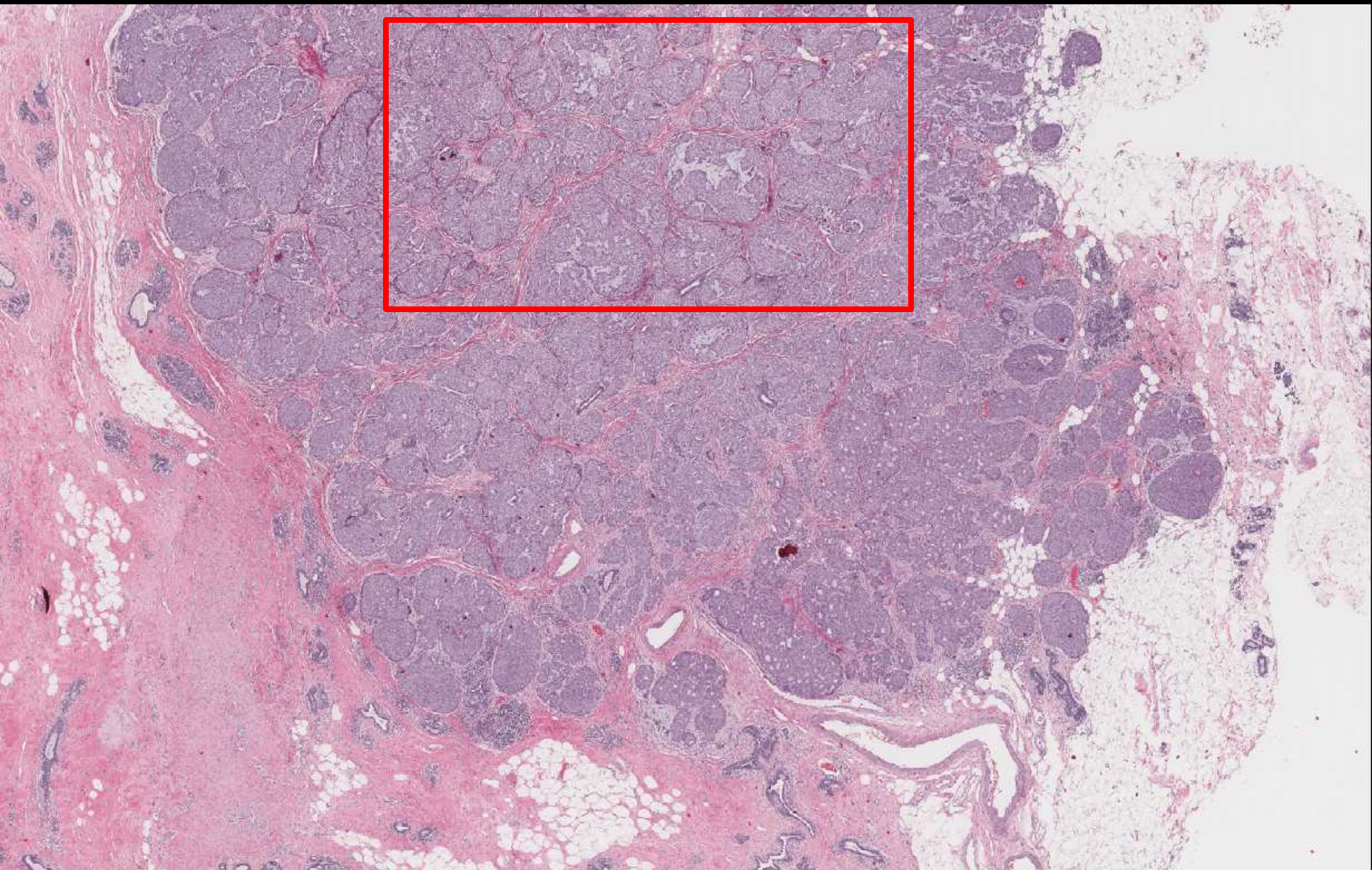


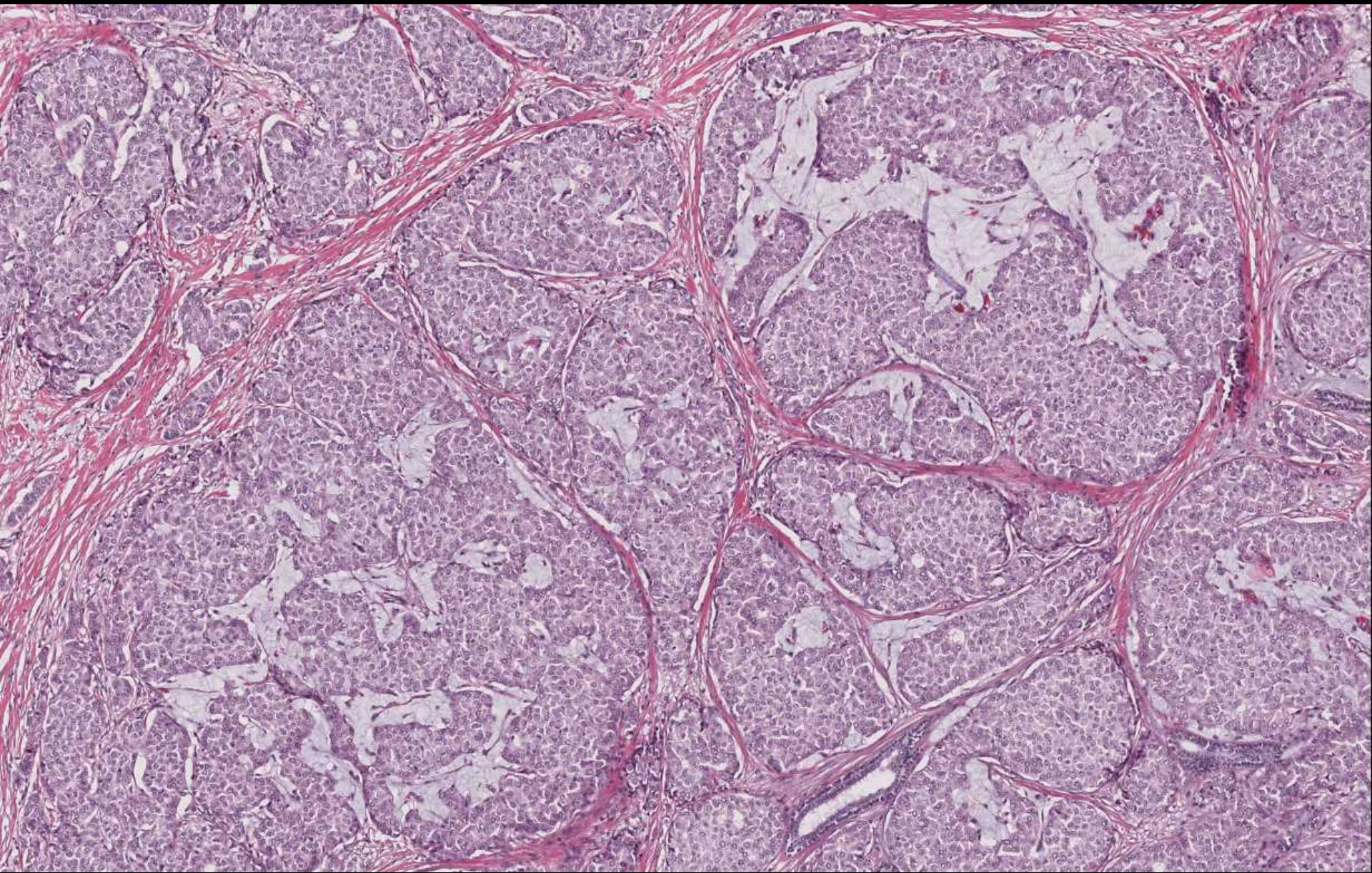


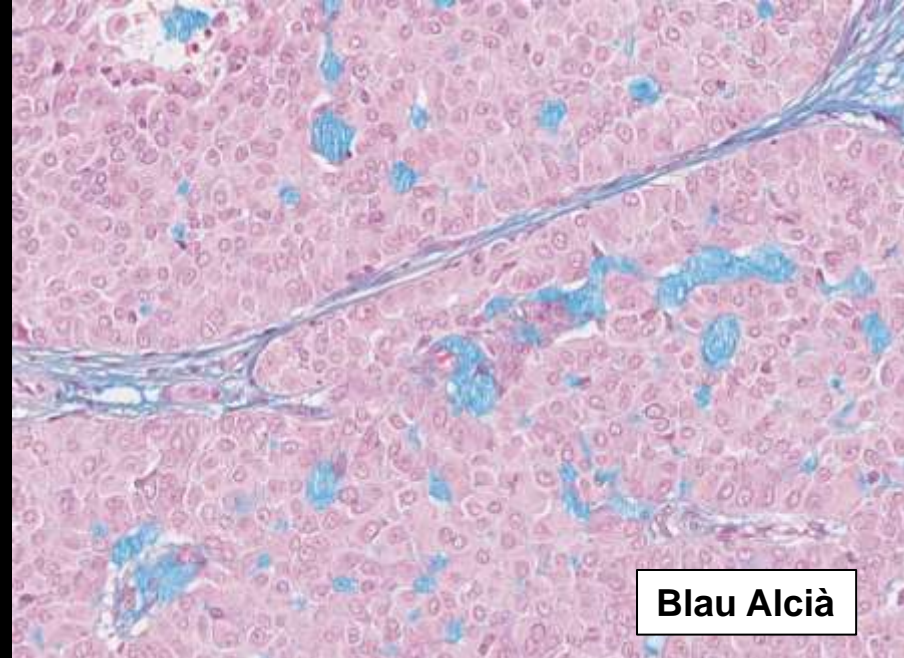
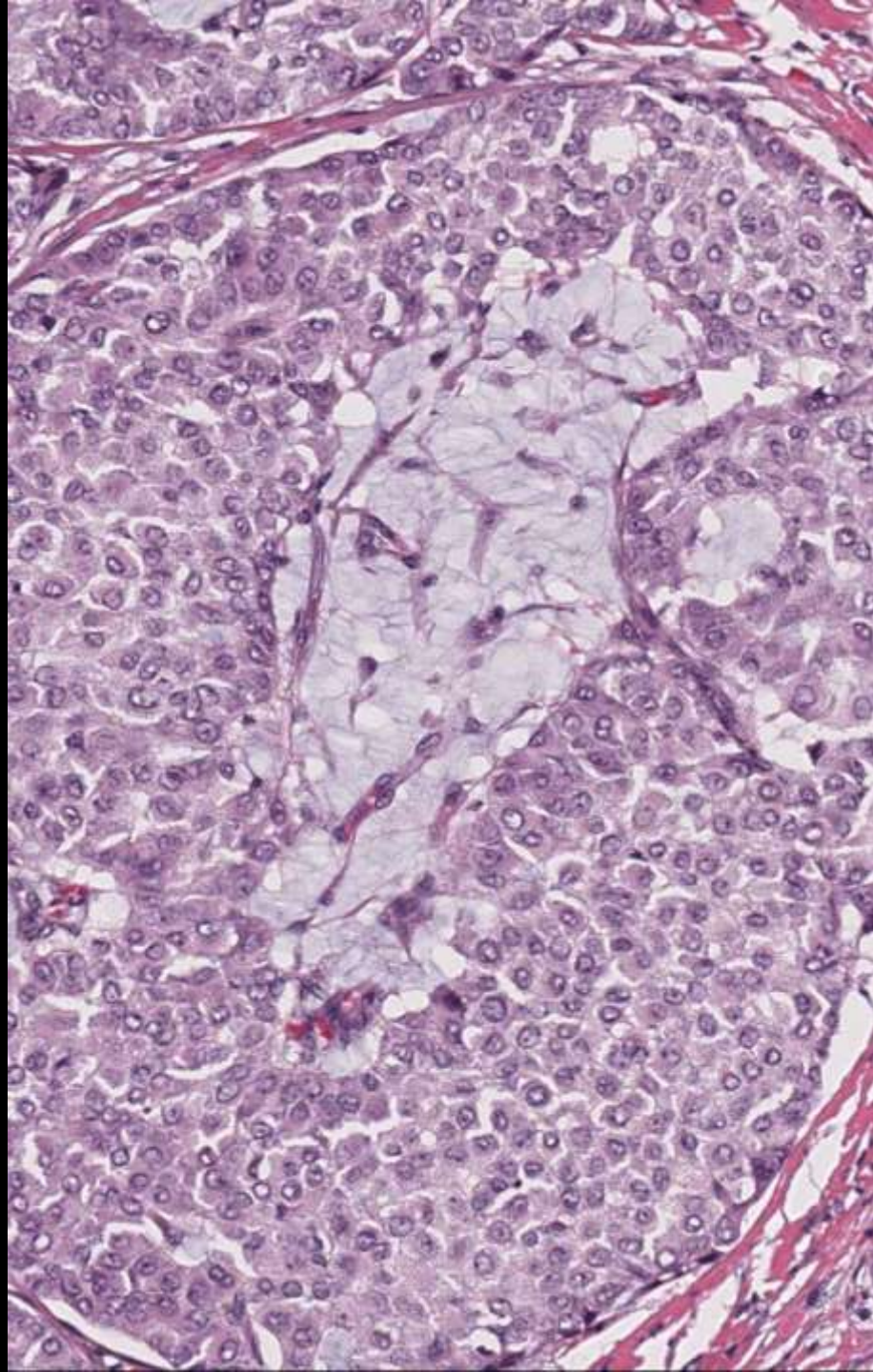




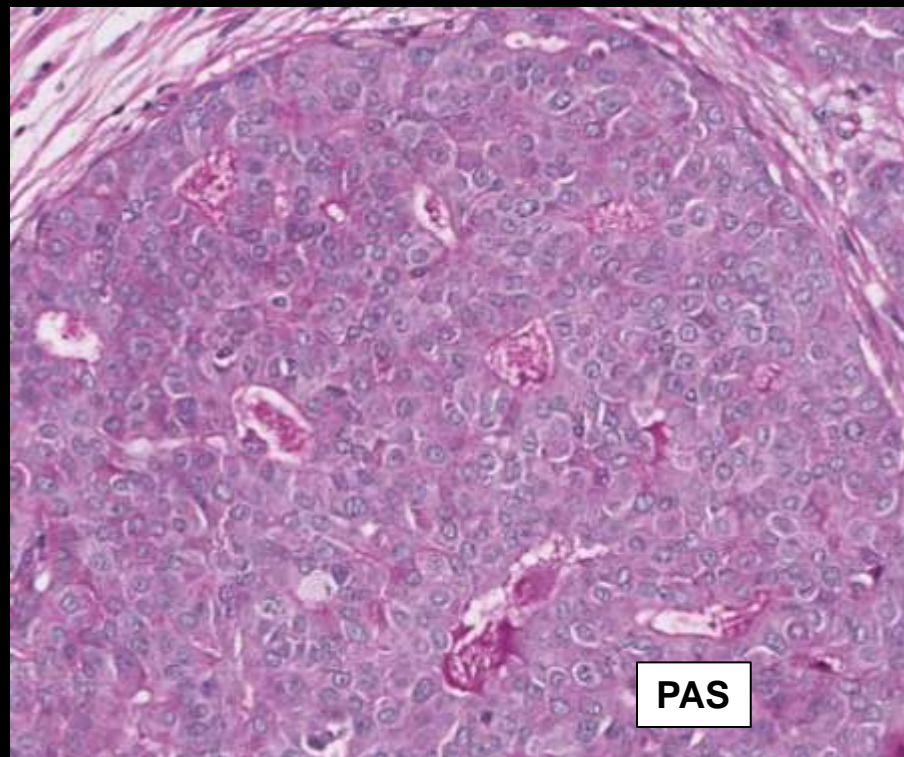








**Blau Alcià**



**PAS**

**Patr3: Luminal A**

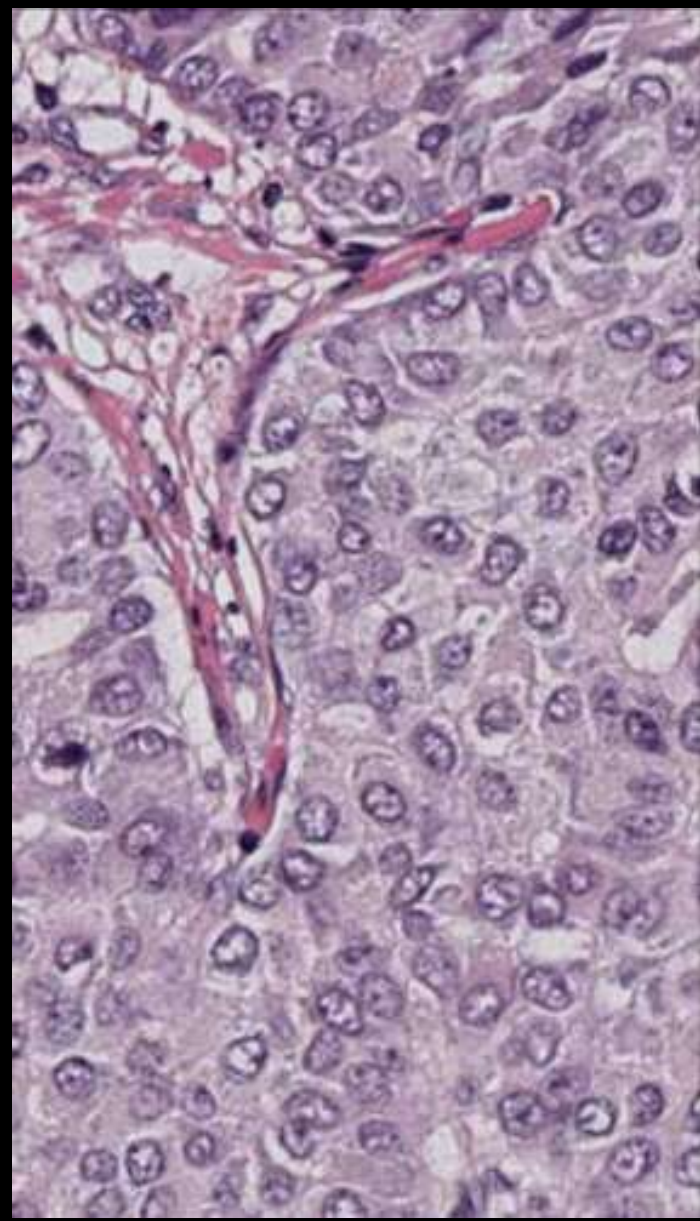
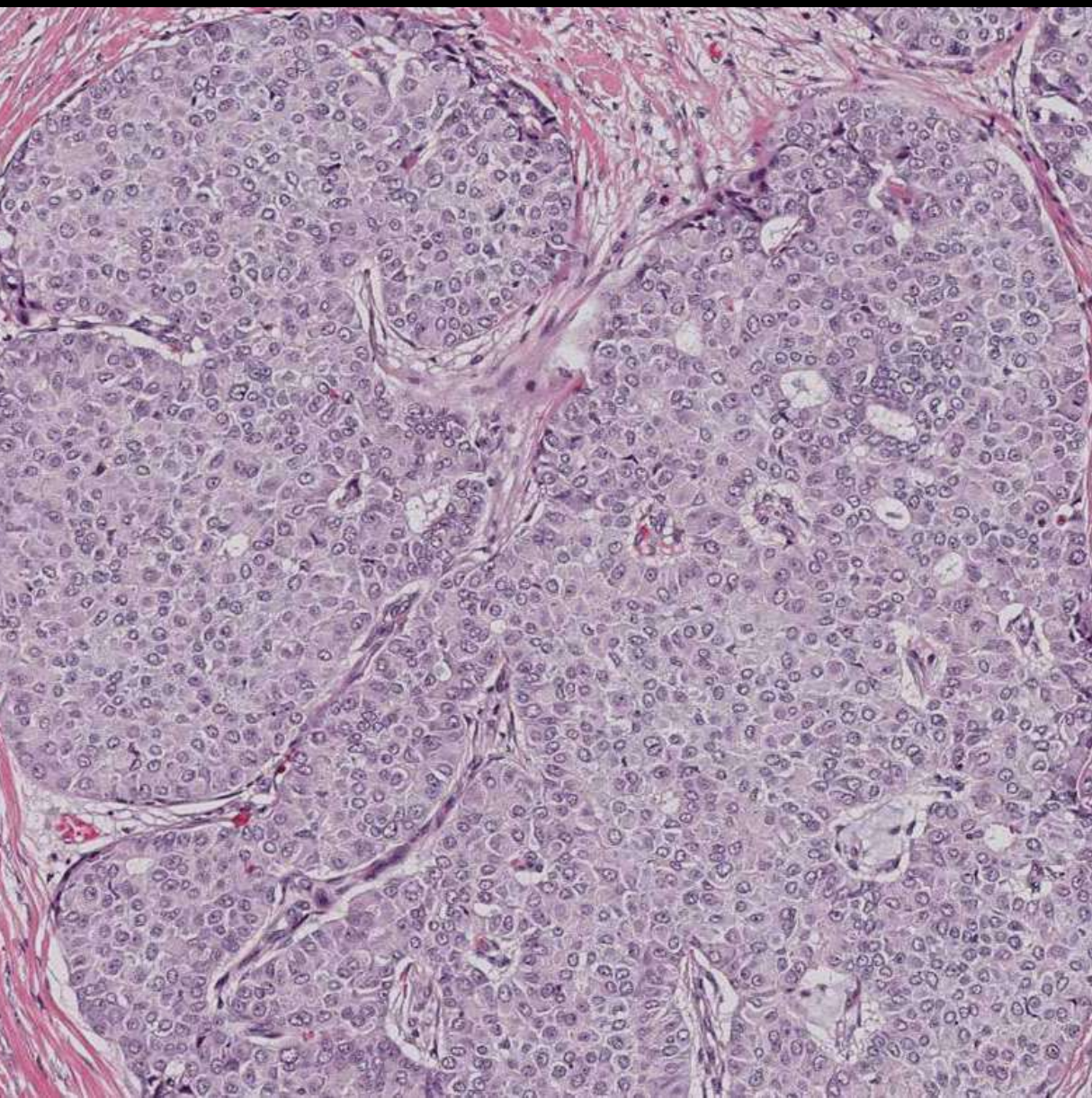
RE

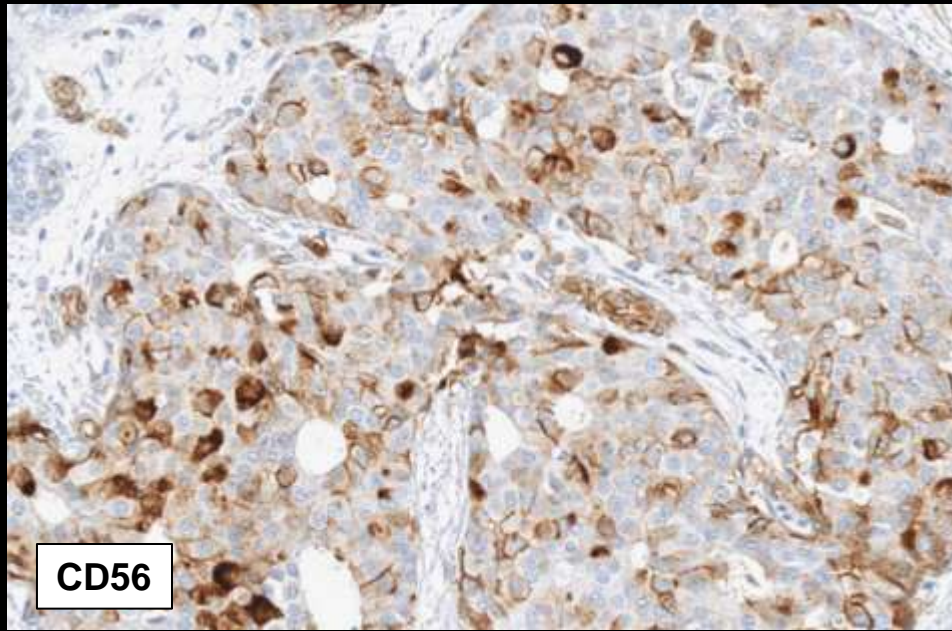
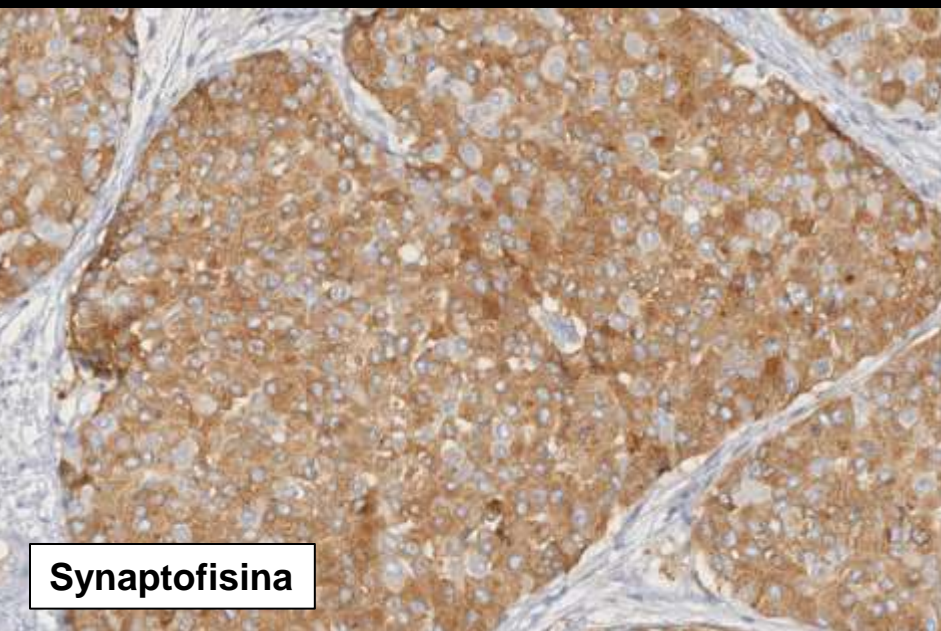
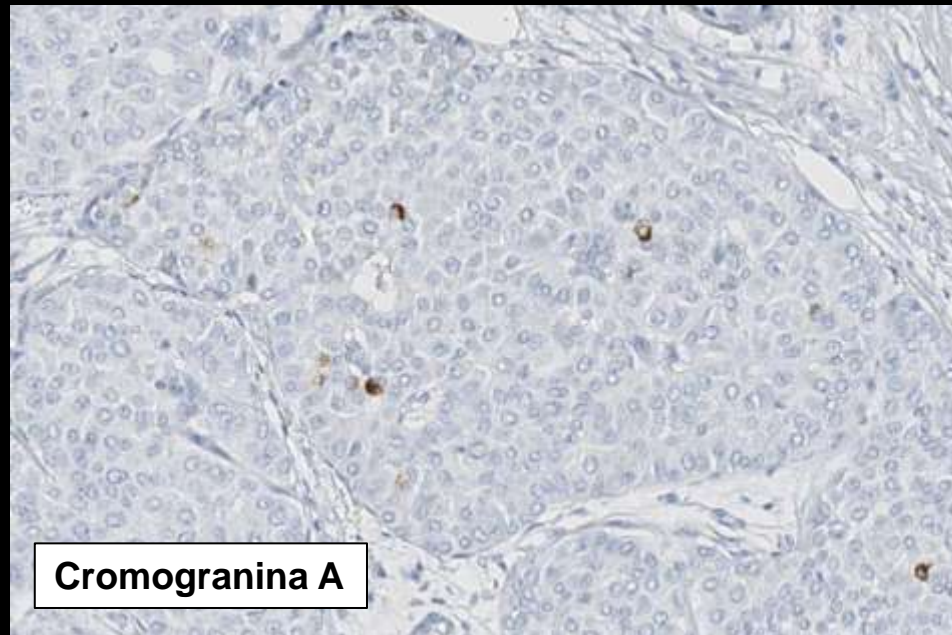
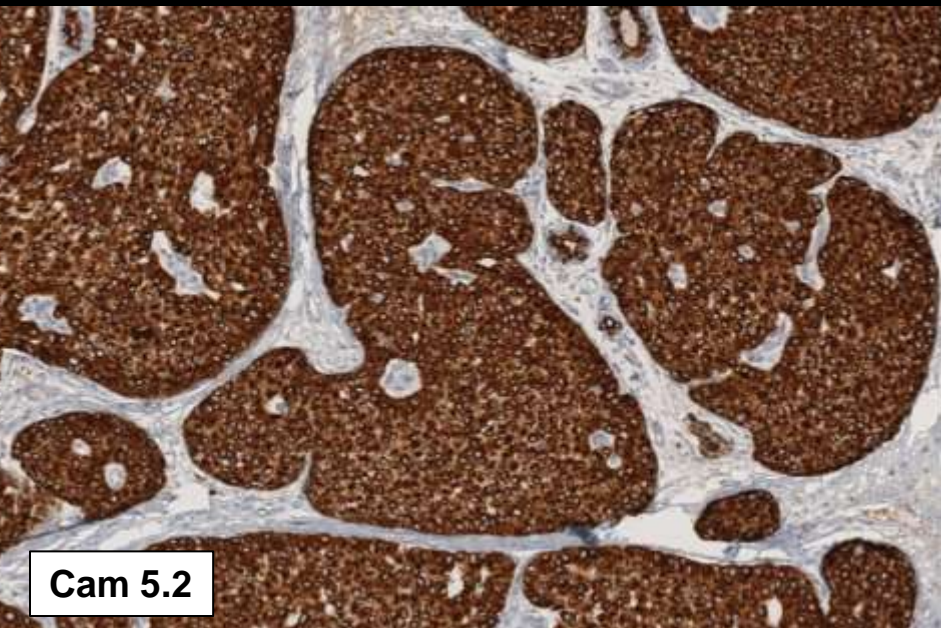
RP

HER-2

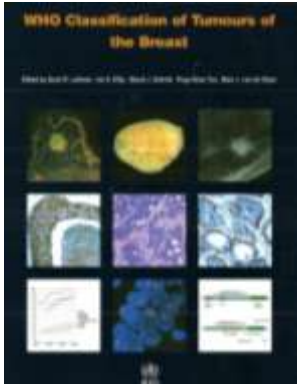
Ki 67: < 10 %







# **TUMOR NEUROENDOCRÍ BEN DIFERENCIAT**



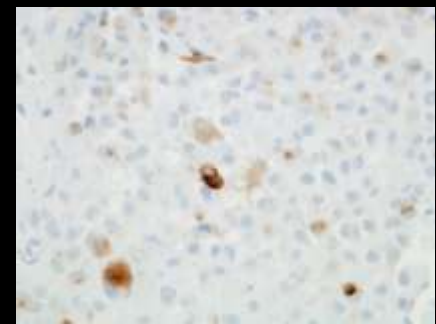
# Carcinomes especials infreqüents

## Carcinomes amb característiques neuroendocrines

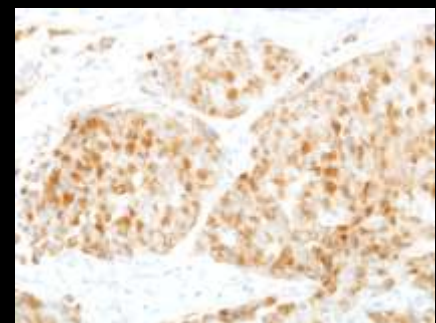
**Incidència: < 1 %**

**Edat: 60-70 a**

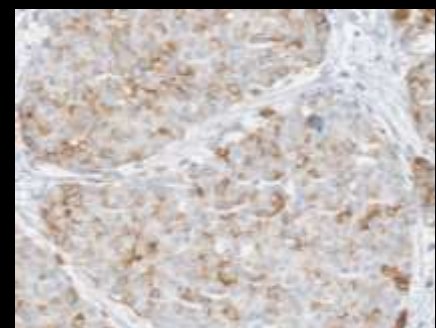
- ✓ **Morfologia semblant als carcinomes neuroendocrins de pulmó i aparell digestiu**
- ✓ **> 50 % de expressió de marcadors neuroendocrins**



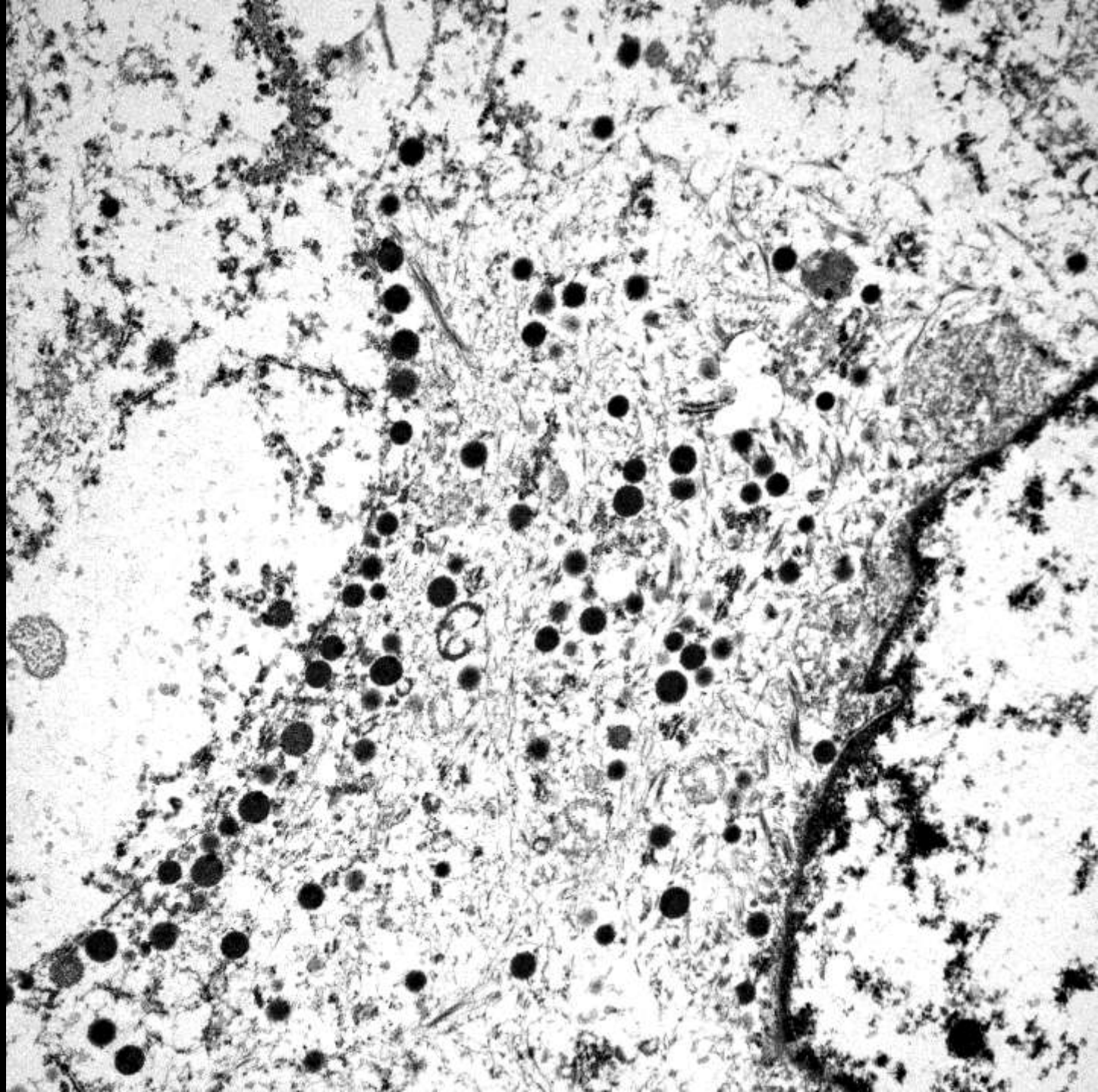
**Cromogranina A**

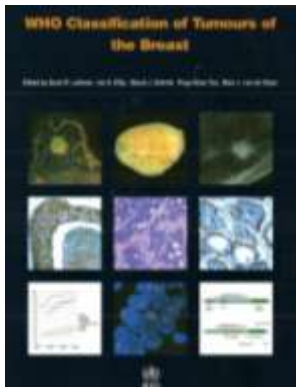


**Synaptofisina**



**CD56**

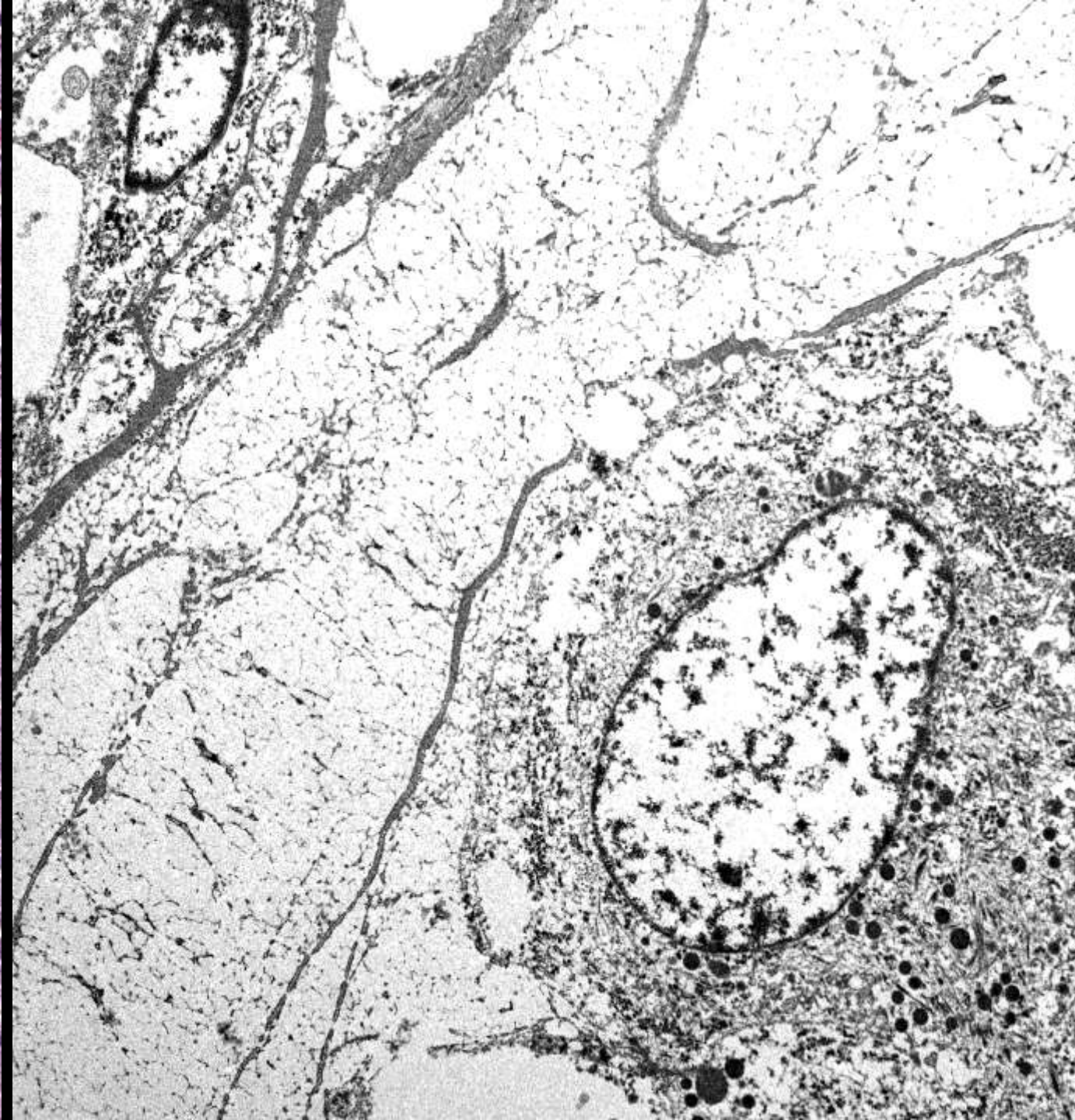
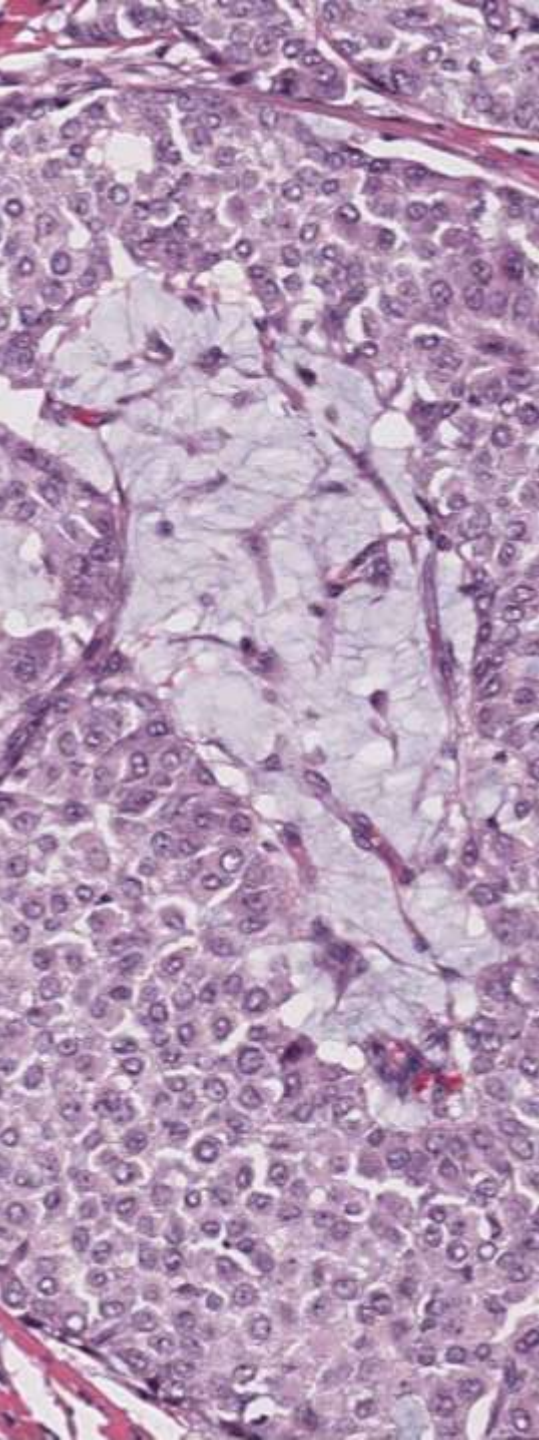




# Carcinomes amb característiques neuroendocrines

- ✓ Tumor neuroendocrí ben diferenciat
- ✓ Carcinoma neuroendocrí poc diferenciat /carcinoma de cèl·lula petita
- ✓ Carcinoma amb diferenciació neuroendocrina

**Carcinoma invasiu NST**  
**Carcinoma mucinós (B)**  
**Carcinoma papil·lar sòlid**



# Mammary neuroendocrine carcinoma with mucinous differentiation: A clinicopathological study of 15 cases

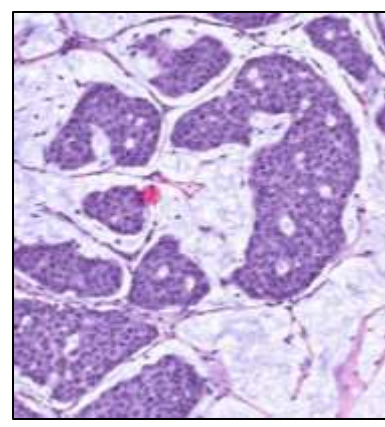
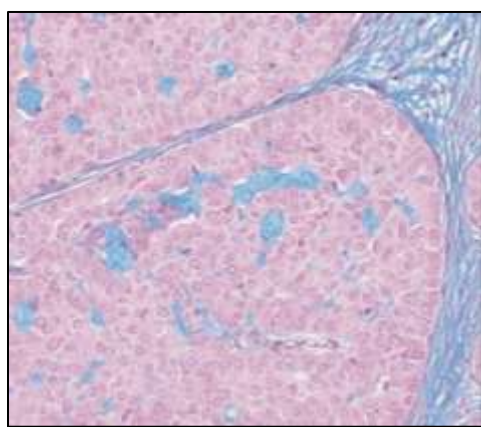
Slim Charfi<sup>a,\*</sup>, Chiraz Ben Ayed<sup>a,b</sup>, Hela Mni<sup>a</sup>, Sameh Ellouze<sup>a</sup>, Kais Chaabane<sup>c</sup>, Jihene Feki<sup>b</sup>, Mounir Frikha<sup>b</sup>, Jamel Daoud<sup>d</sup> and Tahya Boudawara-Sellami<sup>a</sup>

<sup>a</sup>Department of Pathology, CHU Habib Bourguiba, Sfax, Tunisia

<sup>b</sup>Department of Medical Oncology, CHU Habib Bourguiba, Sfax, Tunisia

<sup>c</sup>Department of Gynecology and Obstetrics, CHU Hedi Chaker, Sfax, Tunisia

<sup>d</sup>Department of Radiotherapy, CHU Habib Bourguiba, Sfax, Tunisia



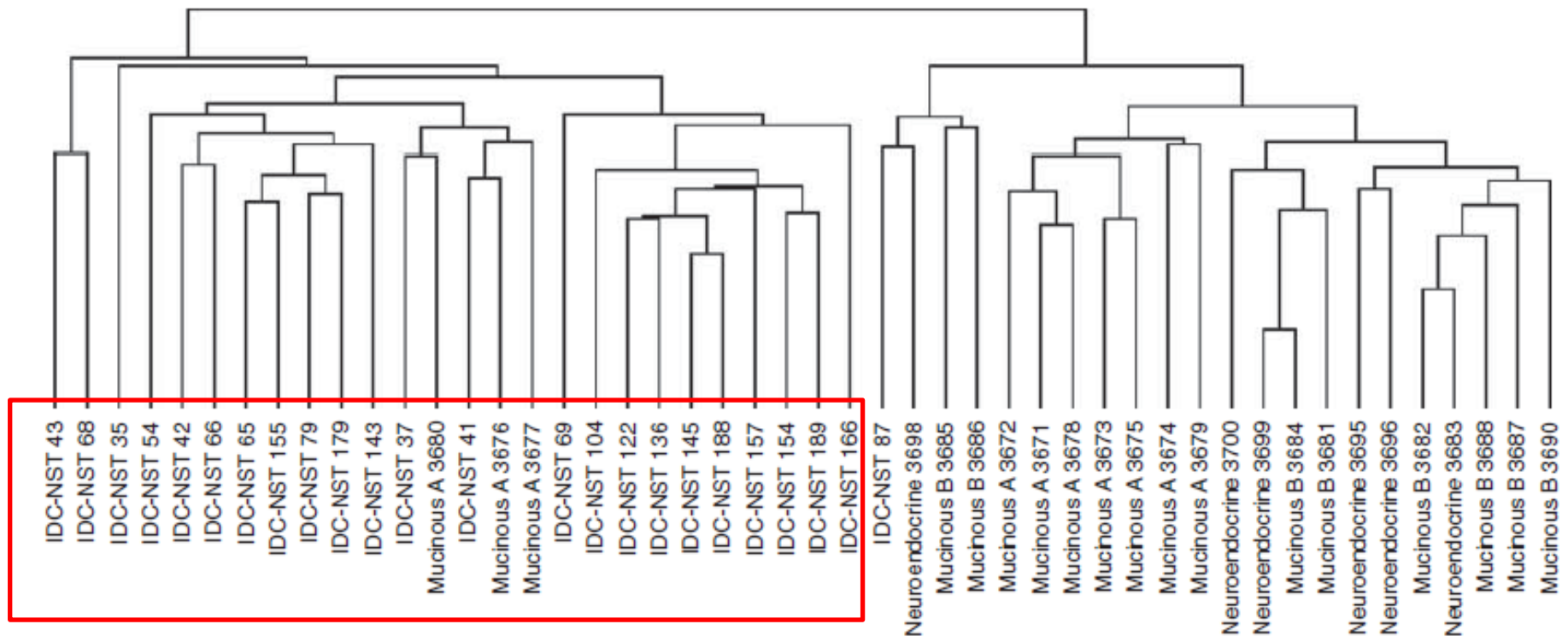
## Immunohistochemical findings

Case	Chromogranin (%)	Synaptophysin (%)	ER (Allred' score)	PR (Allred' score)	Her-2	Ki-67	p53
1	–	+ (80%)	+ (6)	+ (7)	–	<1%	–
2	+ (15%)	+ (80%)	–	+ (7)	–	<1%	–
3	–	+ (60%)	+ (5)	+ (8)	–	<1%	–
4	–	+ (70%)	+ (7)	+ (8)	–	<1%	–
5	+ (80%)	+ (90%)	+ (6)	–	–	<1%	–
6	–	+ (60%)	–	+ (7)	–	<1%	–
7	+ (95%)	+ (80%)	+ (8)	+ (8)	–	<1%	–
8	+ (60%)	+ (90%)	+ (8)	+ (8)	–	<1%	–
9	+ (60%)	+ (20%)	–	+ (4)	–	1%	–
10	+ (10%)	+ (100%)	+ (8)	+ (4)	–	<1%	–
11	+ (10%)	+ (75%)	+ (8)	+ (8)	–	<1%	–
12	+ (100%)	+ (100%)	+ (8)	+ (8)	–	<1%	–
13	+ (75%)	–	+ (7)	+ (6)	–	<1%	–
14	+ (80%)	+ (80%)	+ (7)	+ (8)	–	<1%	–
15	+ (100%)	+ (100%)	+ (6)	+ (7)	–	<1%	–



# Mucinous and neuroendocrine breast carcinomas are transcriptionally distinct from invasive ductal carcinomas of no special type

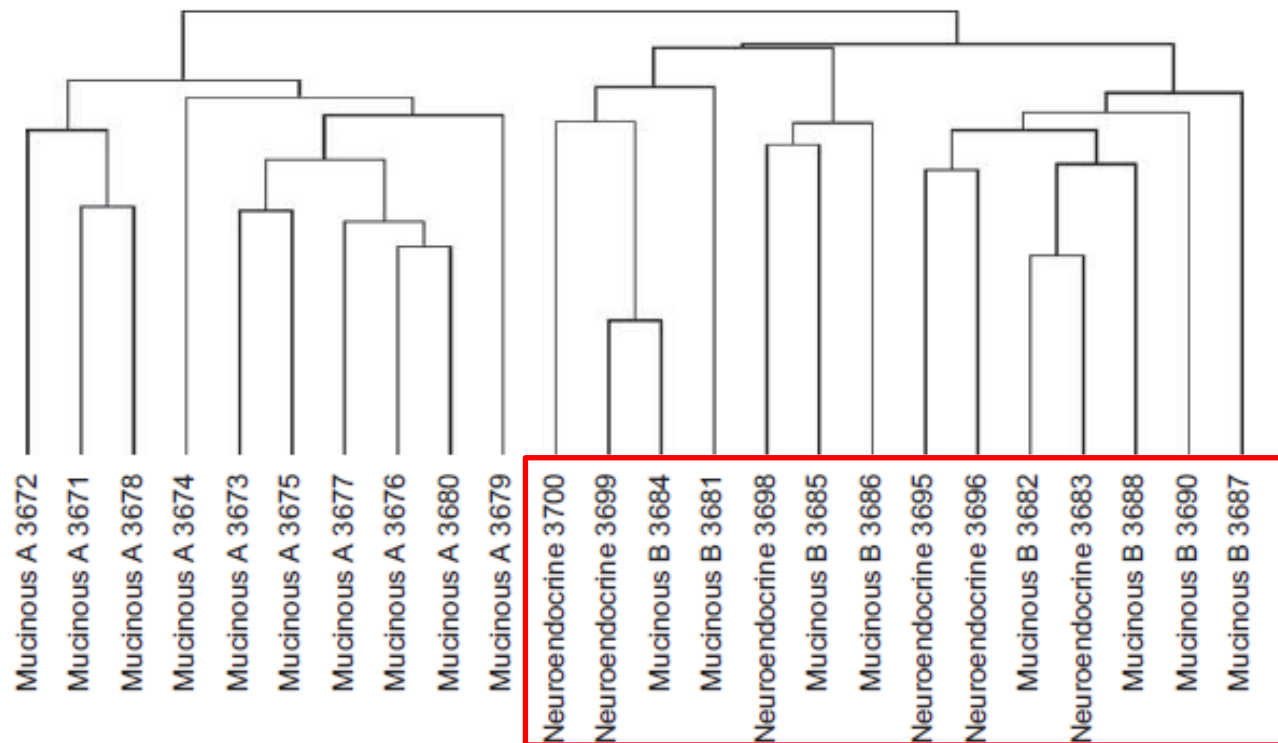
Britta Weigelt<sup>1,3</sup>, Felipe C Geyer<sup>2</sup>, Hugo M Horlings<sup>1</sup>, Bas Kreike<sup>1</sup>, Hans Halfwerk<sup>1</sup> and Jorge S Reis-Filho<sup>2</sup>



**Figure 3** Unsupervised hierarchical clustering of mucinous, neuroendocrine and grade- and molecular subtype-matched invasive ductal carcinomas. Average-linkage clustering of 10 mucinous A, 8 mucinous B, 6 neuroendocrine cancers and 24 invasive ductal carcinomas of no special type (IDC-NST) using 8398 significantly regulated transcripts.

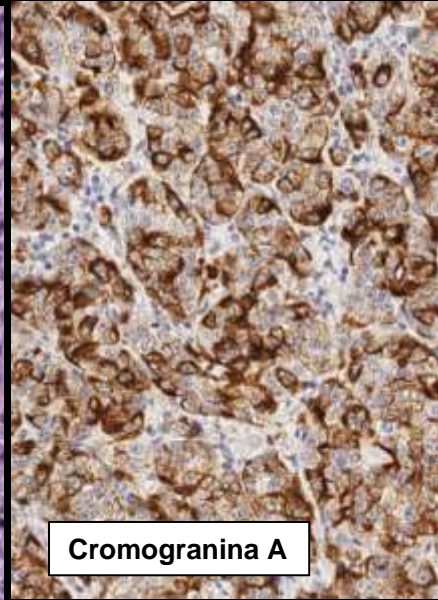
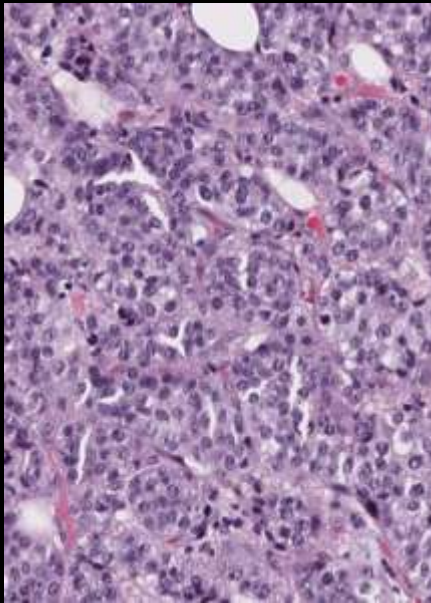
# Mucinous and neuroendocrine breast carcinomas are transcriptionally distinct from invasive ductal carcinomas of no special type

Britta Weigelt<sup>1,3</sup>, Felipe C Geyer<sup>2</sup>, Hugo M Horlings<sup>1</sup>, Bas Kreike<sup>1</sup>, Hans Halfwerk<sup>1</sup> and Jorge S Reis-Filho<sup>2</sup>

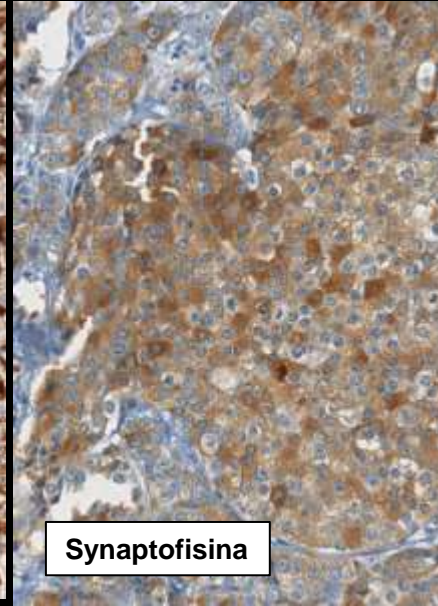


**Figure 5** Unsupervised hierarchical clustering of mucinous and neuroendocrine carcinomas. Average-linkage clustering of 10 mucinous A, 8 mucinous B and 6 neuroendocrine tumours using 8398 significantly regulated transcripts.

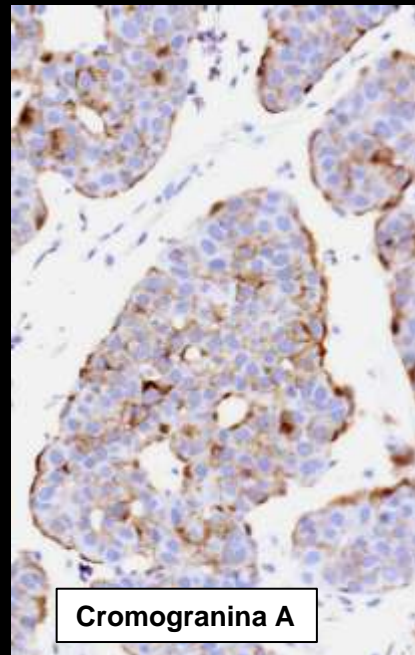
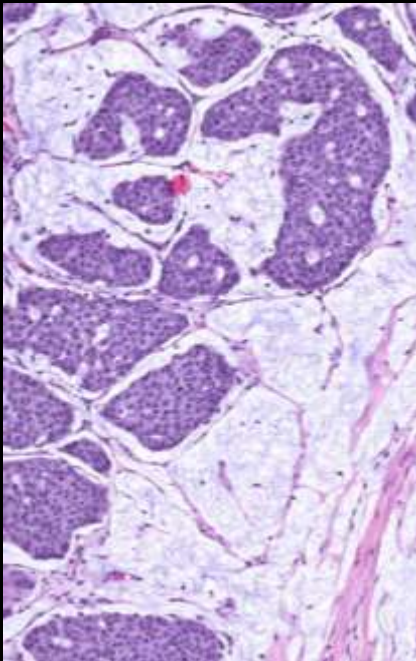
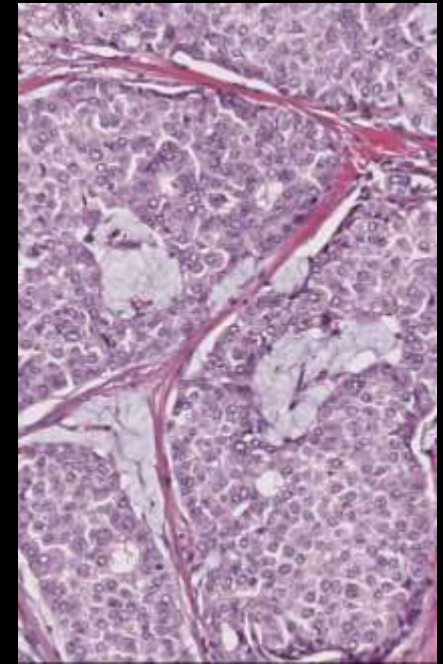
# Tumor / Carcinoma neuroendocrí



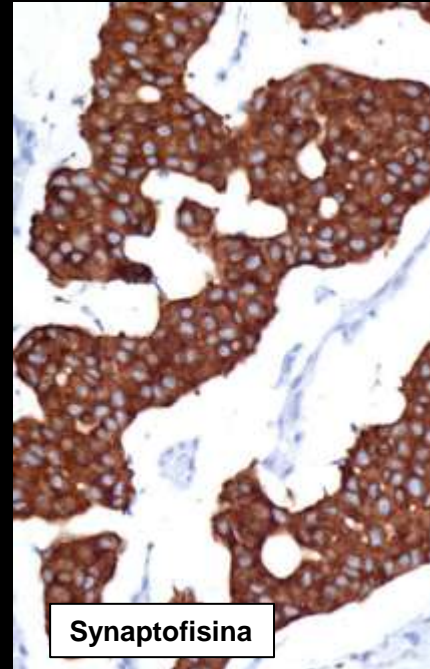
Cromogranina A



Synaptofisina



Cromogranina A



Synaptofisina

# Carcinoma mucinos (B)

